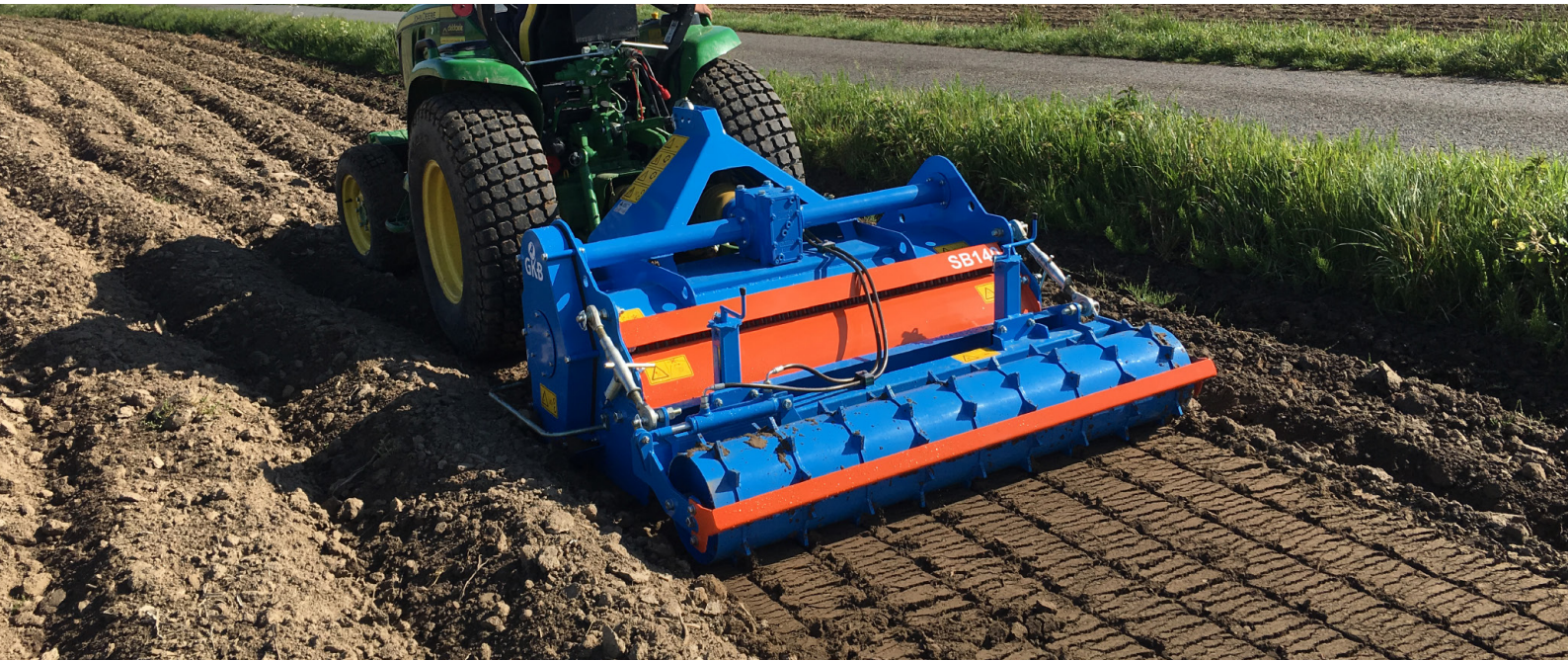
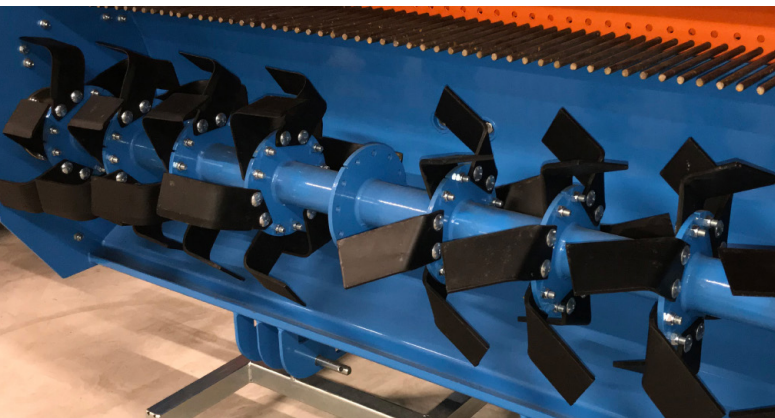




GKB Stoneburier



Creating the perfect natural grass sports field or a unique golf course starts with the right foundation. Do you have areas where the top layer is full of stones? Does this problem result in low grass density? With the Stoneburier we bring you the solution. The Stoneburier is indispensable for creating a perfect seedbed! GKB makes all its machines the way we would like them ourselves, and this is reflected in the quality. This makes the Stoneburier the perfect machine to free your top layer from stones!



The Stoneburier can be equipped with 45° and 90° fraising blades. The 45° blades stir up the soil well, but result in a slightly messier working image. The 90° blades ensure a more even working image, but also press the soil a little more. In this way, there are always milling cutters available that meet your requirements. This ensures that the Stoneburier is a versatile machine that can be perfectly tailored to your challenge!



The soil that is thrown up comes up against the bar screen behind the rotor. Here the stones and the ground are separated from each other. The stones fall directly to the ground, as the soil passes through the sieve and covers the stones. After this it is finished with a roller. The roller of the Stoneburier can be moved hydraulically from left to right. The exact working path can be determined with the help of the roller.

THE WORKER IS KING



Stoneburier

Specifications:

Type	SB120	SB140	SB160	SB180	SB200
Working width	120 cm / 48"	140 cm / 55"	160 cm / 63"	180 cm / 71"	200 cm / 79"
Working depth	0 - 17 cm / 0 - 6,7"*	0 - 17 cm / 0 - 6,7"*	0 - 17 cm / 0 - 6,7"*	0 - 17 cm / 0 - 6,7"*	0 - 17 cm / 0 - 6,7"*
Dimensions (L x W x H)	180 x 160 x 110 cm / 71 x 63 x 43"	180 x 180 x 110 cm / 71 x 71 x 43"	180 x 200 x 110 cm / 71 x 79 x 43"	180 x 220 x 110 cm / 71 x 87 x 43"	180 x 240 x 110 cm / 71 x 95 x 43"
Capacity watertanks	80 l	90 l	100 l	110 l	120 l
Weight (with empty watertanks)	500 kg / 1105 lbs	600 kg / 1325 lbs	700 kg / 1545 lbs	800 kg / 1765 lbs	900 kg / 1985
Power requirement	20 - 40 hp + creeper gear	35 - 50 hp + creeper gear	40 - 55 hp + creeper gear	50 - 70 hp + creeper gear	55 - 75 hp + creeper gear
Linkage	Standard three-point hitch cat I - II	Standard three-point hitch cat I - II	Standard three-point hitch cat I - II	Standard three-point hitch cat I - II	Standard three-point hitch cat I - II
Operating speed	0 - 2 km/h / 0 - 1,2 mph**	0 - 2 km/h / 0 - 1,2 mph**	0 - 2 km/h / 0 - 1,2 mph**	0 - 2 km/h / 0 - 1,2 mph**	0 - 2 km/h / 0 - 1,2 mph**

Options

45° blades	Turn the soil better, slightly messier work result.
90° blades	Turn the soil a little less, neater work result.

Comments

*	The working depth depends entirely on the working method, working speed and the surface.
**	The working speed depends entirely on the working method, working depth and the surface.

THE WORKER IS KING